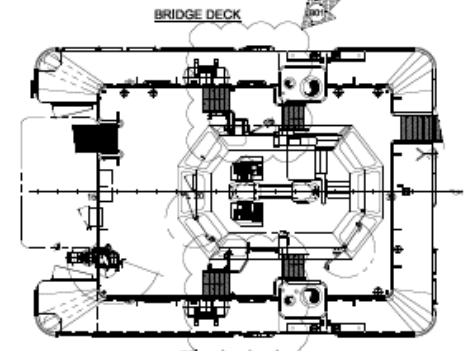
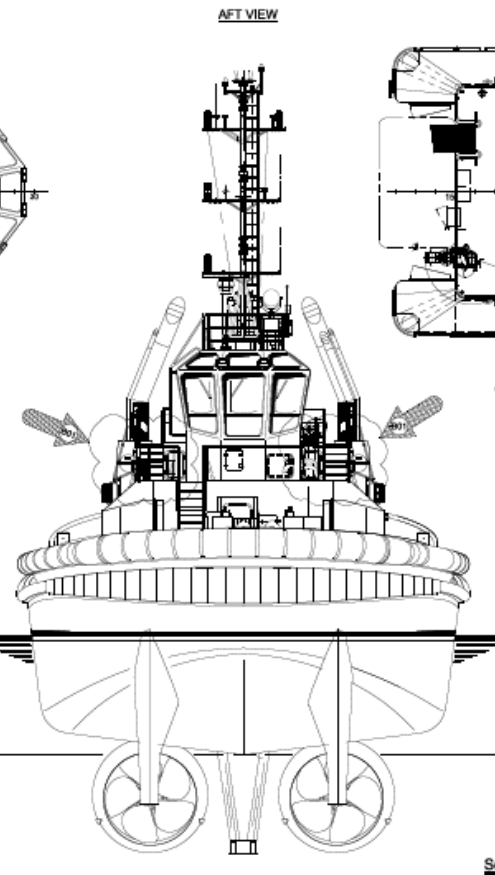
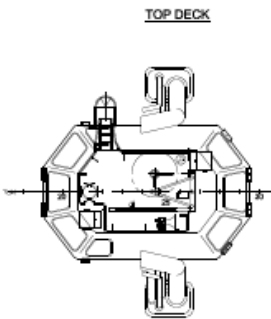
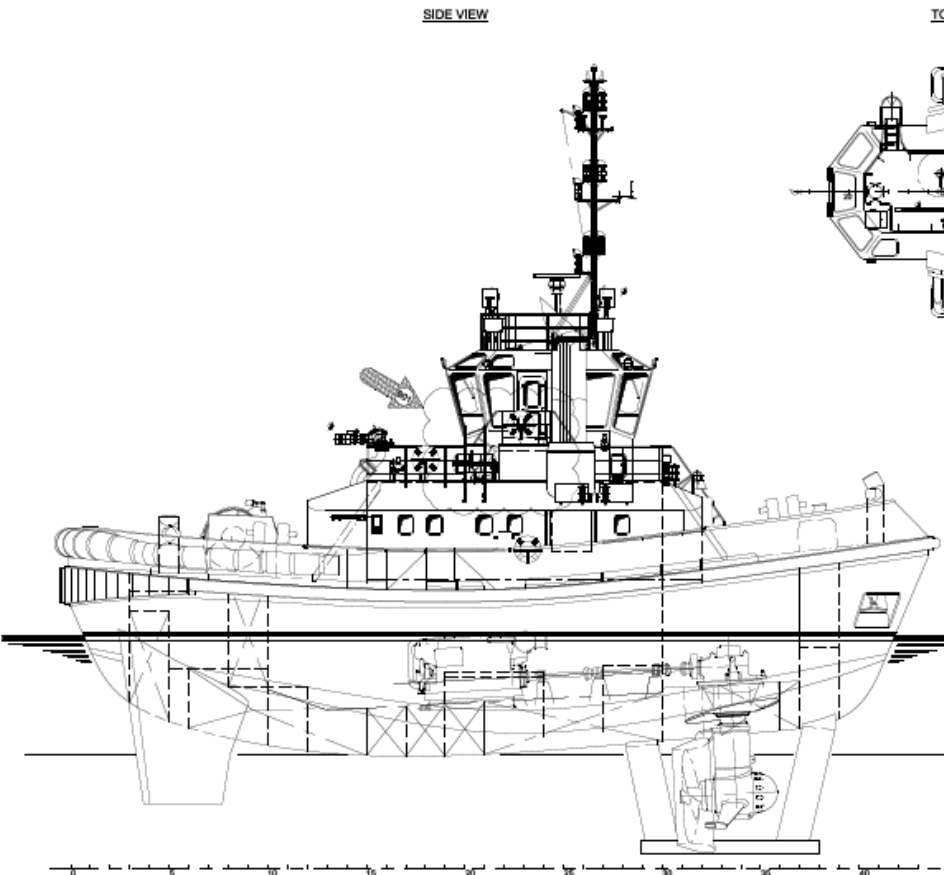
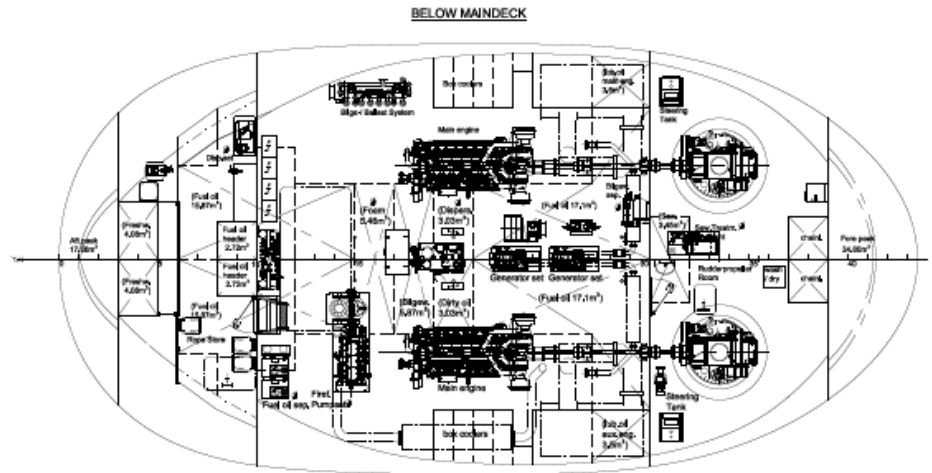
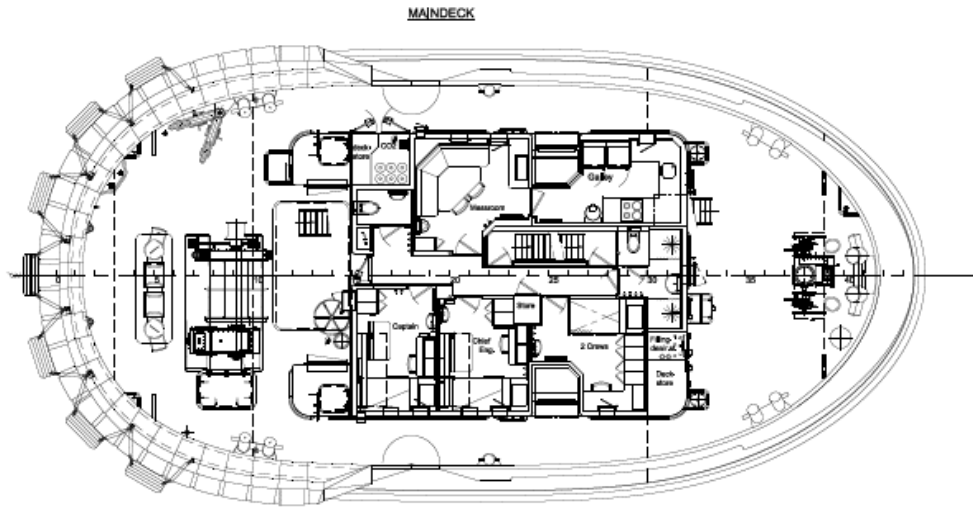




*CAPE LEEUWIN &
CAPE NATURALISTE*

CAPE LEEUWIN AND CAPE NATURALISTE VESSEL SPECIFICATIONS SHEET

YEAR BUILT	2016 Built by Damen Shipyards in Song Cam, Vietnam
CLASS	Lloyd's Register
TYPE OF VESSEL	ATD 2412 HARBOUR TUG
LENGTH OVERALL	24.74m
MAXIMUM BREADTH	12.63m
MOULDED DEPTH	4.6m
HULL AND DECK CONSTRUCTION	Steel
MAIN ENGINES	2 x Caterpillar 3516c (2100kW)
GENERATORS	2 x Caterpillar
SPEED	12 Knots
BOLLARD PULL	70.3 Tonnes
FUEL	72.9m³
FRESH WATER	8.2m³
DECK MACHINERY	Aft Towing Winch Fire Fighting Equipment
ACCOMMODATION	4 Berth
DESIGNER	Damen
LIFERAFTS	2 x 6 Person
MAXIMUM CREW	10 Person



Damen ATD Tug 2412 Twin Fin®



Principal dimensions:
 Length o.a. 24.74 m
 Beam o.a. 12.63 m
 Depth at sides 4.60 m
 Draught aft (approx.) 5.85 m
 Items marked with * are optional equipment

Project No.		Revision		Date	
021 2519-01-03 (MAC)		General updated		2015-07-20	
A21 2514-03-02		SRV 2/10/15		1/20 created	
Date		Author		Checked by	
2015-07-20		Damen		Damen	
Scale		1:500		1:500	
Title		General arrangement		1/301	
Drawn by		Checked by		Date	
Damen		Damen		2015-07-20	
Project No.		Revision		Date	
021 2519-01-03 (MAC)		General updated		2015-07-20	
A21 2514-03-02		SRV 2/10/15		1/20 created	
Date		Author		Checked by	
2015-07-20		Damen		Damen	
Scale		1:500		1:500	
Title		General arrangement		1/301	
Drawn by		Checked by		Date	
Damen		Damen		2015-07-20	

