

Mackenzie

MARINE & TOWAGE PTY LTD

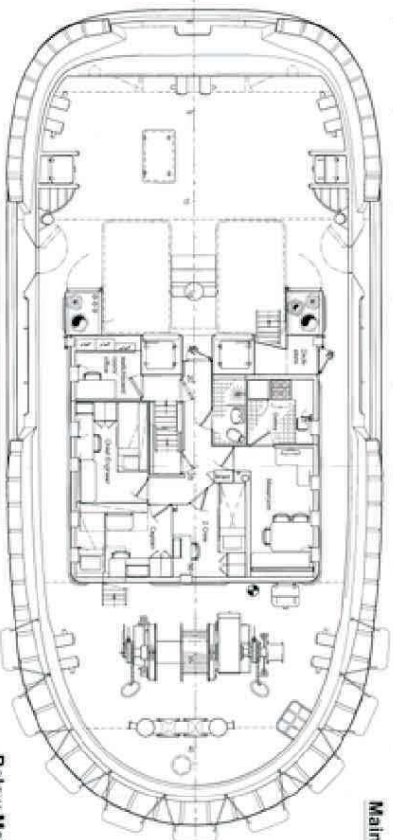
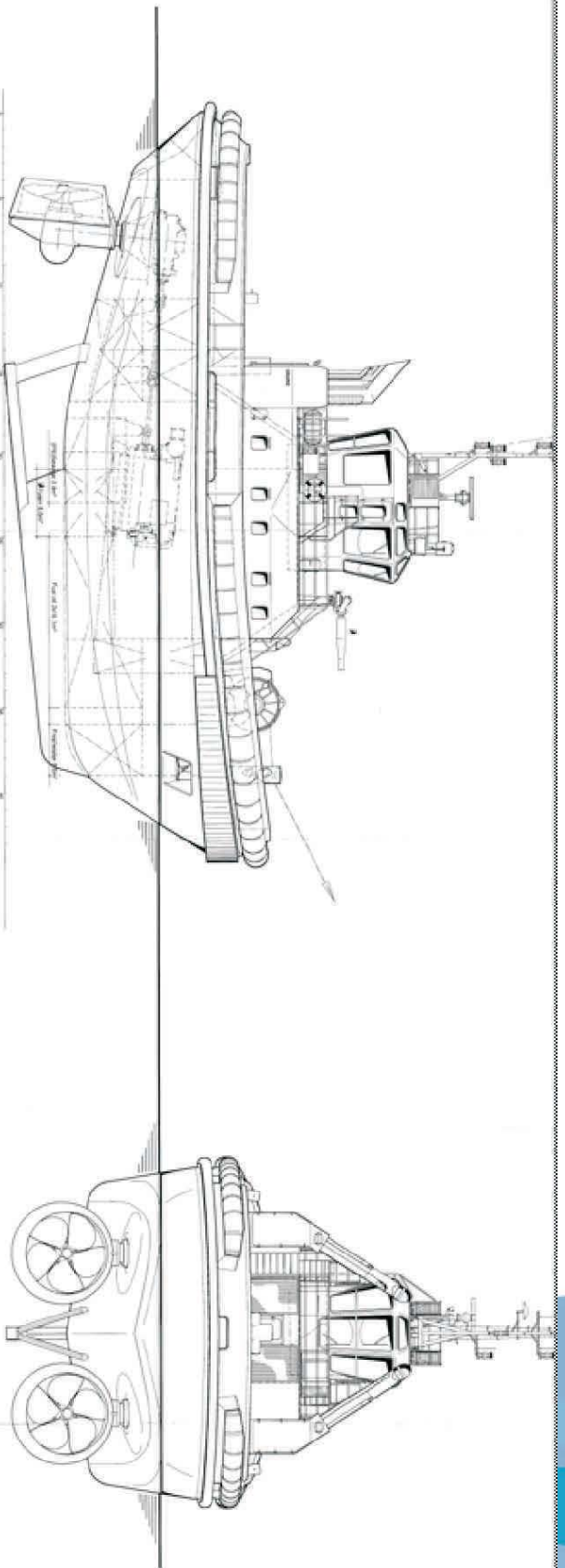


HELLFIRE BAY

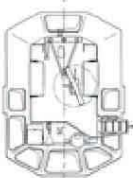
HELLFIRE BAY

VESSEL SPECIFICATIONS SHEET

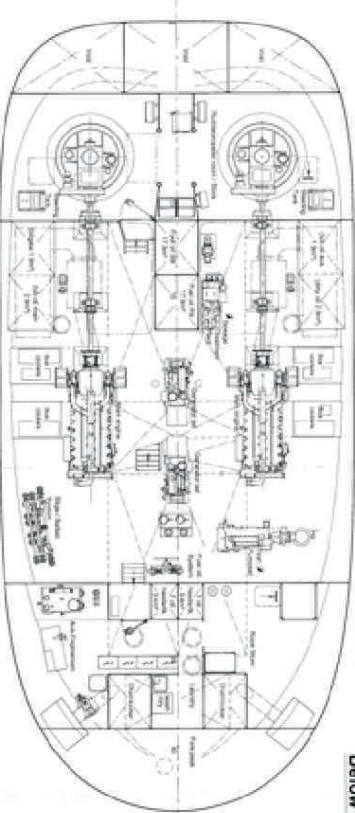
YEAR BUILT	2013 Built by Damen Shipyards in Danang, Vietnam
LENGTH OVERALL	24.47m
CLASS	Lloyd's Register
MOULDED BEAM	10.7m
DESIGN DRAFT	4.6m
CONSTRUCTION	Steel
MAIN ENGINES	2 X Caterpillar 3516c (2100KW @ 1600 RPM)
GENERATORS	2 X Caterpillar
PROPULSION	ASD
SPEED	12.5 Knots
BOLLARD PULL	68 Tonne
FUEL	68m³
FRESH WATER	8.8m³
DECK MACHINERY	Fwd Winch, Deck Crane, Towing Hook, Fire Fighting, Capstan
ACCOMMODATION	4 Berth
TYPE OF VESSEL	Harbour Tug
DESIGNER	Damen
HULL AND DECK CONSTRUCTION	Steel
LIFERAFTS	2 x 6 Person
MAXIMUM CREW	6 Person



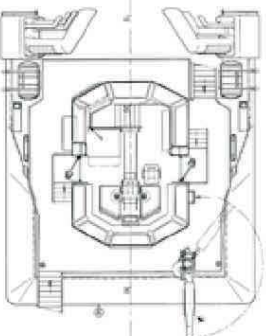
Maindeck



Topdeck



Below Maindeck

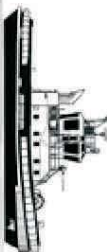


Bridgedeck

Damen ASD Tug 2411

Principal dimensions:

Length o.a. 24.47 m
 Beam o.a. 11.33 m
 Depth at sides 4.60 m
 Draught aft (lipdock) 5.35 m
 Items marked with * are optional equipment



DAMEN

Damen Tugboat Construction

General arrangement

NO. OF DECKS	NO. OF ENGINES	NO. OF PROPELLERS	NO. OF ANCHORS
3	2	2	2
NO. OF HELICOPTER LIFTS	NO. OF CRANES	NO. OF WINCHES	NO. OF WINCHES
0	0	0	0
NO. OF HELICOPTER LIFTS	NO. OF CRANES	NO. OF WINCHES	NO. OF WINCHES
0	0	0	0
NO. OF HELICOPTER LIFTS	NO. OF CRANES	NO. OF WINCHES	NO. OF WINCHES
0	0	0	0
NO. OF HELICOPTER LIFTS	NO. OF CRANES	NO. OF WINCHES	NO. OF WINCHES
0	0	0	0

Scale

